



MIMAR

JG AUTOMOTIVE
Your partner in metal solutions



CORPORATE DOSSIER



Telephone:
(+34) 933 883 230

Mail:
comercial@jgautomotive.com

www.lasermimar.com



MIMAR

JG AUTOMOTIVE
Your partner in metal solutions



INDEX

ABOUT US ▼	4	PRODUCTS ▼	30
LASER MIMAR	4	MACHINED PRODUCTS	32
JG AUTOMOTIVE	6	MACHINE BENCH	34
PRODUCTIVE AREAS ▼	8	WELDED ASSEMBLIES	36
INDUSTRIAL MACHINING	8	FRAMES	38
LASER CUT	10	ASSEMBLIES	40
METAL SHEET BENDING	12	FILTERS AND VALVES	42
ASSEMBLY AND CONSTRUCTION	14	HIGH PRESSURE CYLINDERS	44
WELDING	16	LOW PRESSURE CYLINDERS	46
COLD WELDING ADHESIVE	18	TRAIN WAGON WALLS	48
PAINT AND FINISH TREATMENTS	20	FACTORY CERTIFICATIONS	52
MACHINERY	22	CONTACT	53



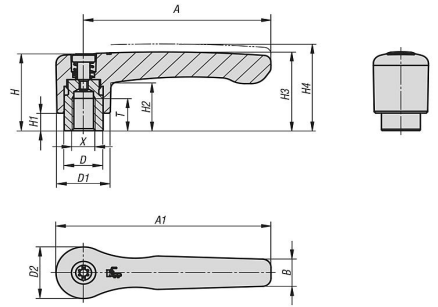
LASER MIMAR

LASER MIMAR is a company focused in manufacturing and production of metal components, frames, cylinders and sheet metal constructions. To grant our success we have cutting edge technologies, most advanced equipment and everything, managed by a highly skilled professional team..

Founded in 1999, **LASER MIMAR** started its activity in Parets del Vallés (Barcelona) as a metal **assemblies manufacturer**, working metal sheet, making high and low pressure cylinders or boilers. To be able to manufacture this products, we have capabilities for cutting, bending, drilling, machining, welding, riveting, adhesive and construction.

Nowadays we develop our activities through our functional areas fully controlled in our layout, integrating all activities necessary to fulfill a high quality manufacture.

In 2021 **JG Automotive** acquires **LASER MIMAR** factory, becoming part of **JG Automotive Group**.



We apply all innovations available to the transformation of metal through our engineering team.

— LASER MIMAR





JG AUTOMOTIVE

Your partner in metal solutions
about us

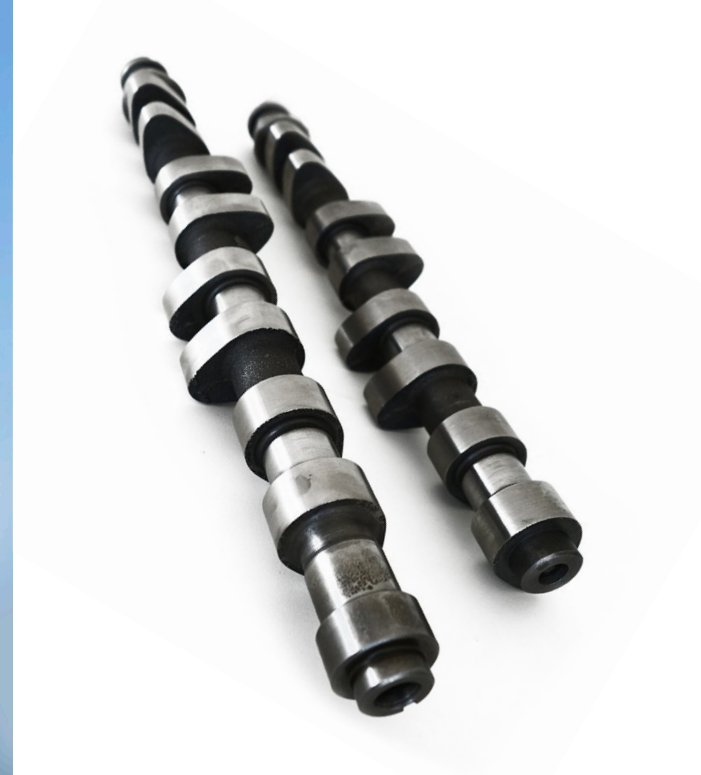
JG AUTOMOTIVE

Founded in 1982, **JG Automotive** main activity is the development, manufacturing and supply of metal components and parts for automotive industry and general industry.

In 2002 we founded with another 18 partners **Global Alliance Automotive**. This big group has **230 engineers** that cooperate with manufacturers in Brazil, Germany, China, India, Italy, South Korea, USA and some other countries, handling a total yearly turnover of **1,720 M€**.

JG Automotive is a reference as supplier of **metallic components** produced under customer design and specifications. We manage the most advanced **technologies** for production: hot and cold forging, investment casting, aluminum casting, machining, sintering, MIM, stamping, fine blanking, wire forming, etc. Thanks to our extensive knowledge of all this productive technologies, we have a big variety the industrial sectors where we can reach a big variety of industrial sectors where we can work with **optimal results in terms of quality and cost**.

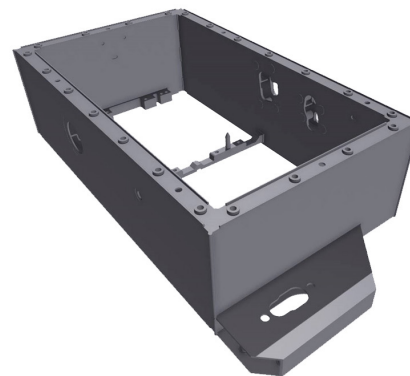
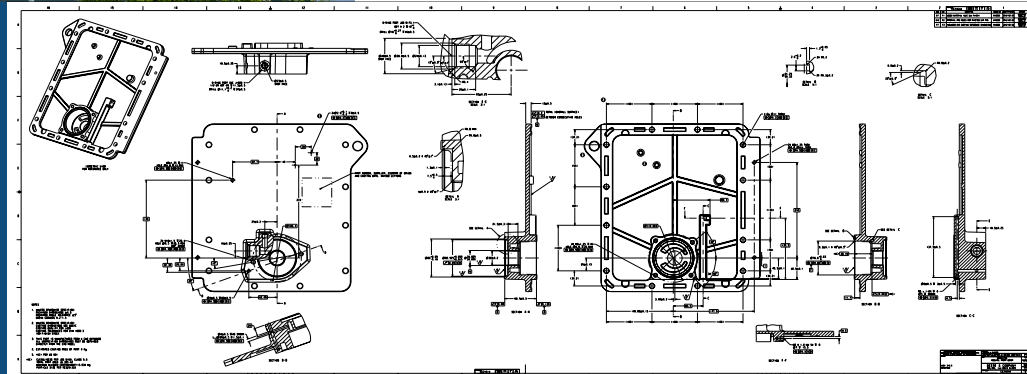




We are a reference in market as manufacturers and suppliers of metallic components designed under our customers specifications, for automotive components or general industry applications, though the use of the most advanced manufacturing technologies and techniques.

— JG AUTOMOTIVE

JGA





INDUSTRIAL MACHINING

In **LASER MIMAR** we have several machining centers, including a 5axis Haas center. This machining capabilities allow us to be independent from other suppliers, managing the full process within our company, making big difference ensuring quality and lead times.

Having our own **machining centers** give us big flexibility and agility to deliver our productions.

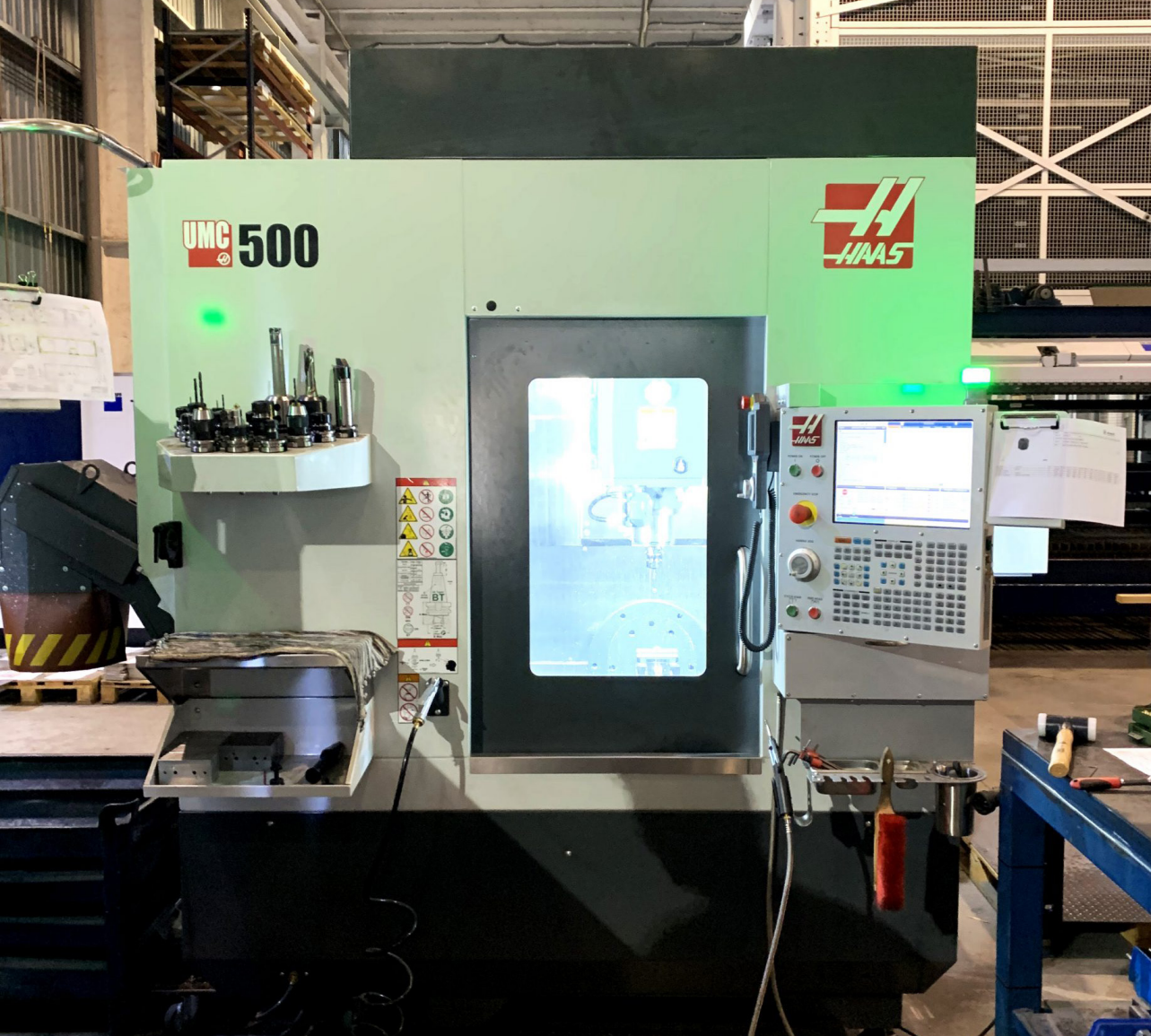
As manufacturer with more than **150 customers**, our installed capacity allow us to produce almost any kind of component, being also possible to produce prototypes. This ensures the possibility of satisfying customer most exigent demand.

We are the manufacturer that any customer can require, in terms of quality, delivery and price, from the **prototypes to the mass production**.

In **LASER MIMAR** we are your partner for the production of tailor-made parts and assemblies. We assume the responsibility of delivery components in time with the maximum quality level.



More information:
lasermimar.com/mecanizado-industrial/



We have equipment and machinery that allows us to provide a full service, including machining capabilities.

— LASER MIMAR



LASER CUT

We provide a full service to companies and professionals with the most **advanced technologies to make your project a success**. Our wide stock of first class materials and our installed capacity allows us to offer finished products always in time.

Automated systems guarantees that cutting from one to thousands of parts with short lead times, always with big accuracy.

MIMAR ensures **industrial solutions** for any productive sector, including from small parts for automotive or general industry to big developments for **construction or infrastructure or renewable energies**.

Materials:

- > Carbon steel
- > Galvanized steel
- > Inox steel
- > Aluminum
- > Copper alloys

Finishes:

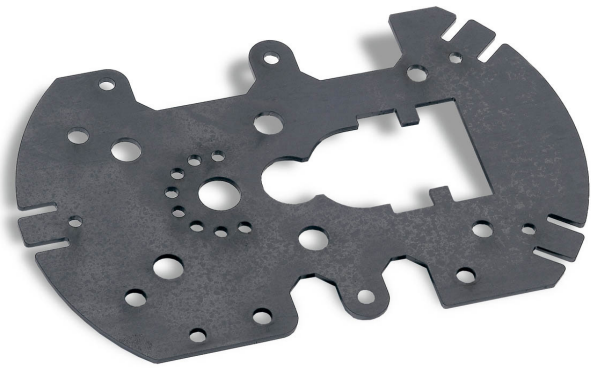
- > Natural
- > Vibrated
- > Polished
- > Brushed
- > Premium shiny with protective sheet

Thickness:

- > 0,5 mm to 25 mmx.
- > Carbon - Inox - Aluminum

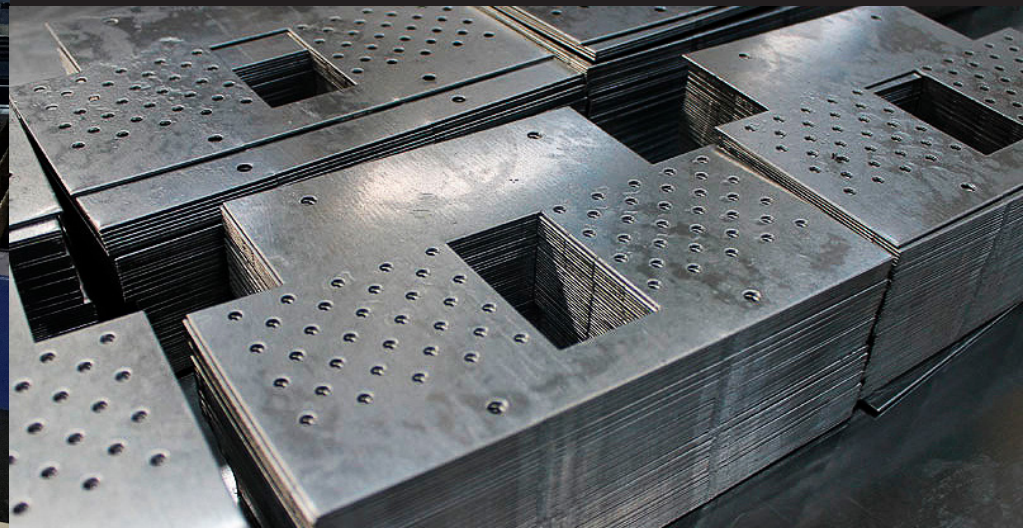


More information:
lasermimar.com/corte-laser/



We manage all metal transformation process from innovation point of view. Engineering for project development.

— LASER MIMAR





METAL SHEET BENDING

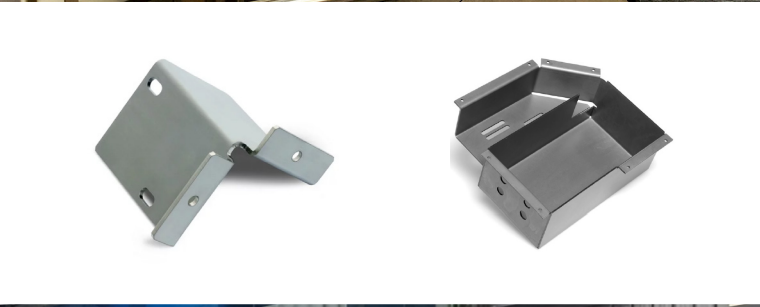
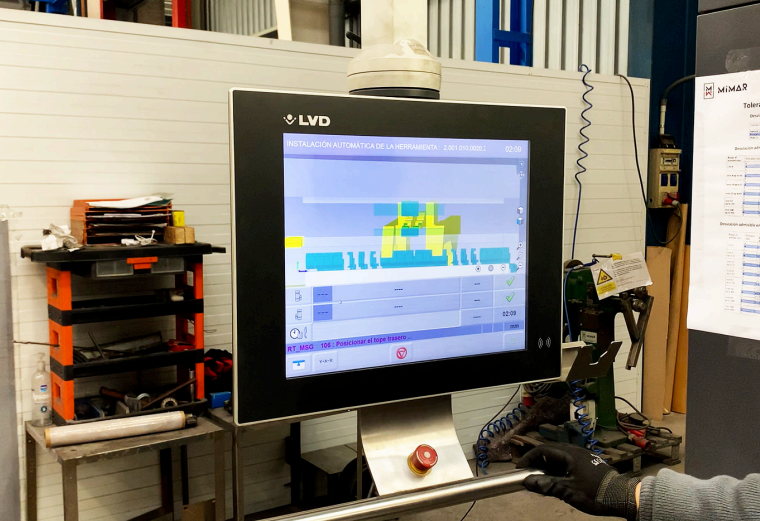
In **LASER MIMAR** we have automated sheet bending machines with **cutting edge technology**. Machinery is programmed from engineering office, so production follows an automated bending sequence that ensures optimal performance. Dimensional accuracy is maximized, assuring that production achieves the design requirements, with a stable process that is **optimized in time and cost**. This production step has big relevance in final assemblies quality level, so we take advanced quality plans to ensure.

Our **CNC programmed machinery** with automated bending tools storage, allows machine to make automated selection in bending process of every tool, quick and with confidence. This automation ensures dimensional stability in process, in addition with our **automated laser cut capabilities**, provides a full service equipment to make complex assemblies with full guarantees of success.

Our team has the **capabilities and experience in metal industry** needed to face any metal construction with full confidence, assuring quality in manufacturing.

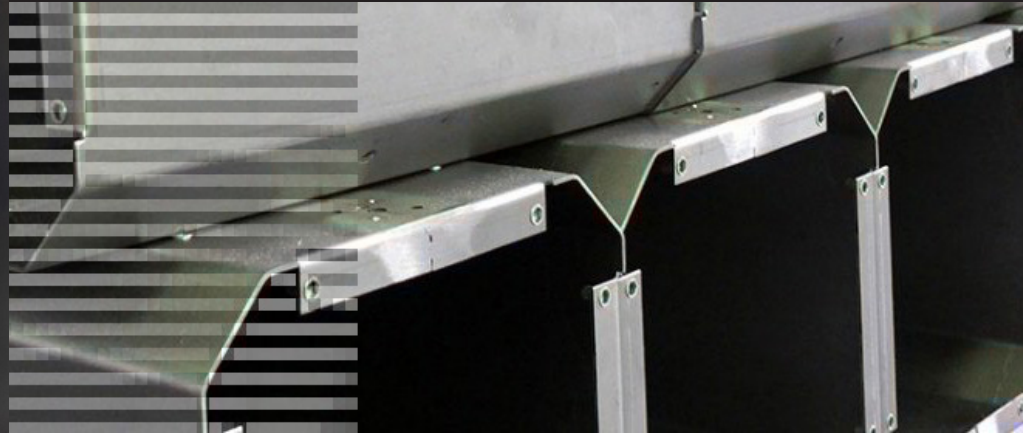


More information:
lasermimar.com/plegado/



We bend with full accuracy your metal components, it doesn't matter if are simple or complex parts.

— LASER MIMAR





ASSEMBLY AND CONSTRUCTION

In **LASER MIMAR** we don't only produce single elements. We are **specialist in complex assemblies that can include mechanical components for specific functions**. We can include in your projects electric motors, actuators or other electronic devices that makes the metallic construction a fully functional machine

We make in house the **engineering design for the production and manufacturing of your assembly**, making it complex machines with specific applications. Is not always needed that customer provides us with designs, we have our own capabilities to elaborate designs to satisfy customer demands and necessities, making project from zero, reaching a final solution with a full project elaboration. In addition, we count with **JG Automotive engineering** team to give us full support when is needed.

Our **engineering capabilities**, added to our manufacturing installed capacity for metal cut, machine, weld, bend and assembly, makes us a perfect partner for our customers to be able to receive **turnkey solutions**.

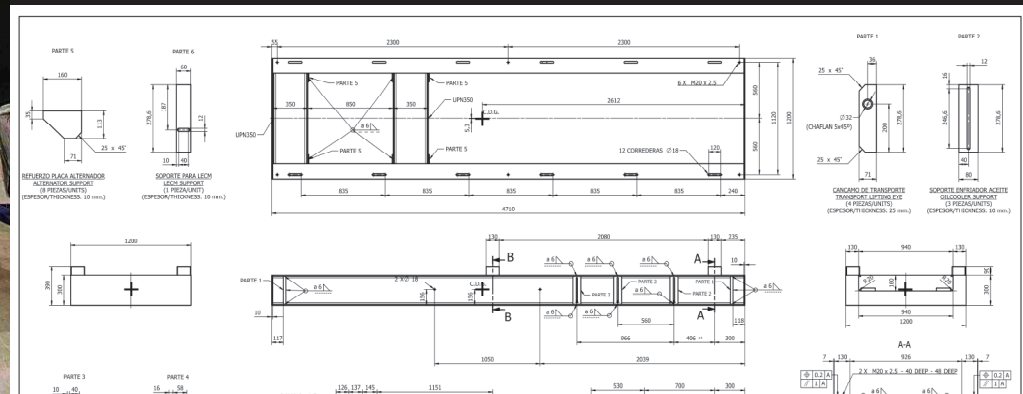


More information:
lasermimar.com/montaje/



In LASER MIMAR we offer the best personalized product in metallic assemblies with a full service, ensuring quality and cost.

— LASER MIMAR





WELDING

In **LASER MIMAR** has a highly skilled personal that capabilities us to face any fabrication, not having problem to challenging ones. We are specialist in welded structures such as ones used in **big machinery** foundation.

We have **automated machinery** performed by robots that capabilities us to make short or long production series that may include a high number of welding cords, making it affordable and ensuring quality and stable performance.

LASER MIMAR personal counts with several welding certifications and homologations that capabilities us to execute your projects of any complexity.

We can weld almost any **metallic alloy with TIG, MIG or MAG techniques**. From small pieces to big machinery foundations or structures.

In addition, we have fully skilled welders that **can weld aluminum and other non ferric alloys**.



KUKA

BEHN
HINDS

LINCOLN
ELECTRIC

Fronius

Castolin Eutectic
Eutectic Castolin

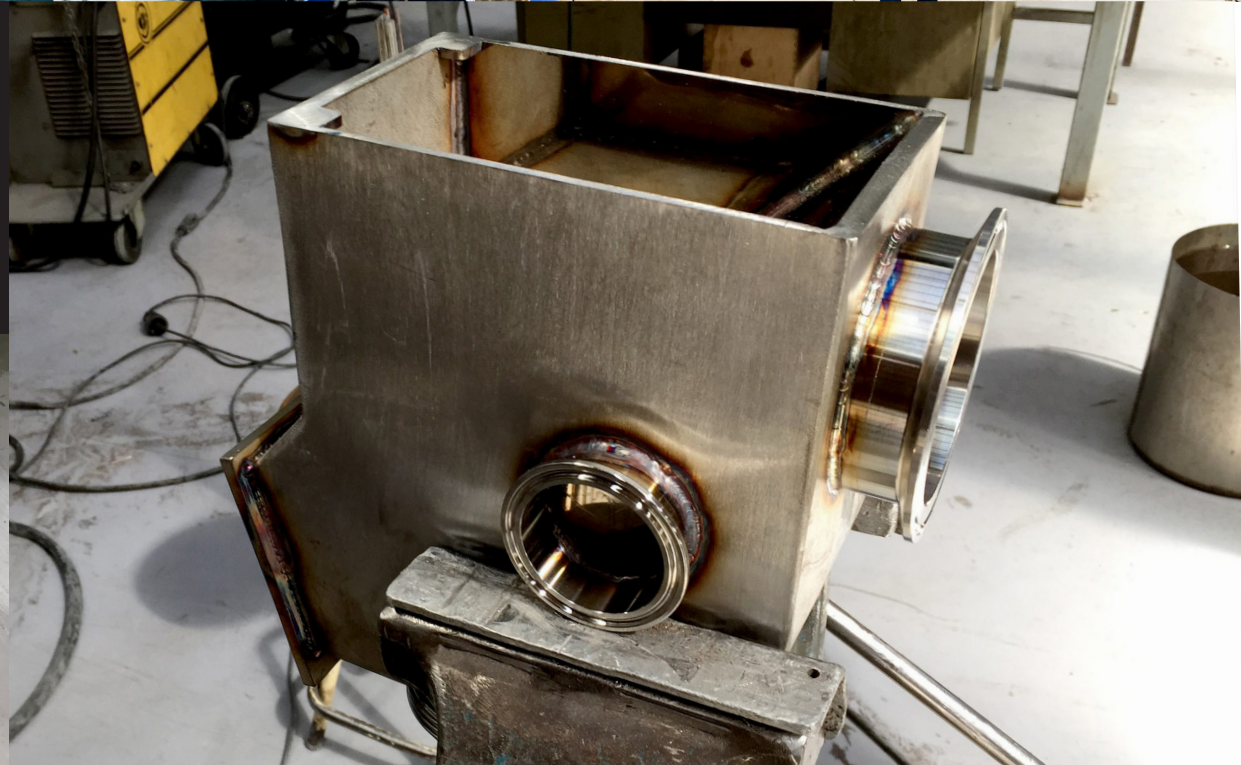
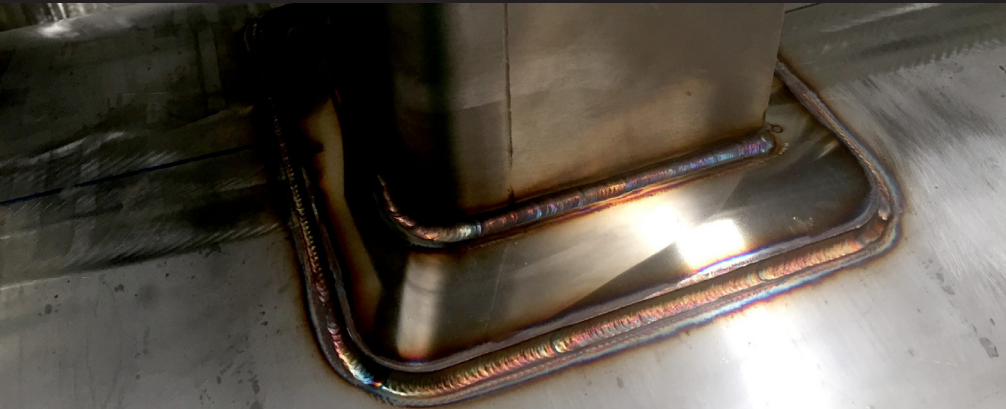


More information:
lasermimar.com/soldadura/



We have adopted the most recent welding solutions to be able to offer the best technologies in our projects.

— LASER MIMAR



COLD WELDING | ADHESIVE

LASER MIMAR has a highly skilled and trained personal that has certifications to include cold welding solutions in our technologies portfolio. We can face simple or complex assemblies to reach a final product with high quality and reduced costs.

Certifications and homologations available make us a top notch company to be your partner in all kind of metal assemblies.

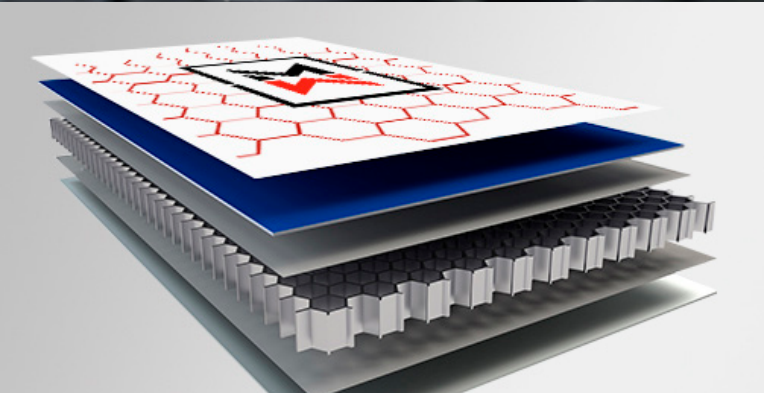
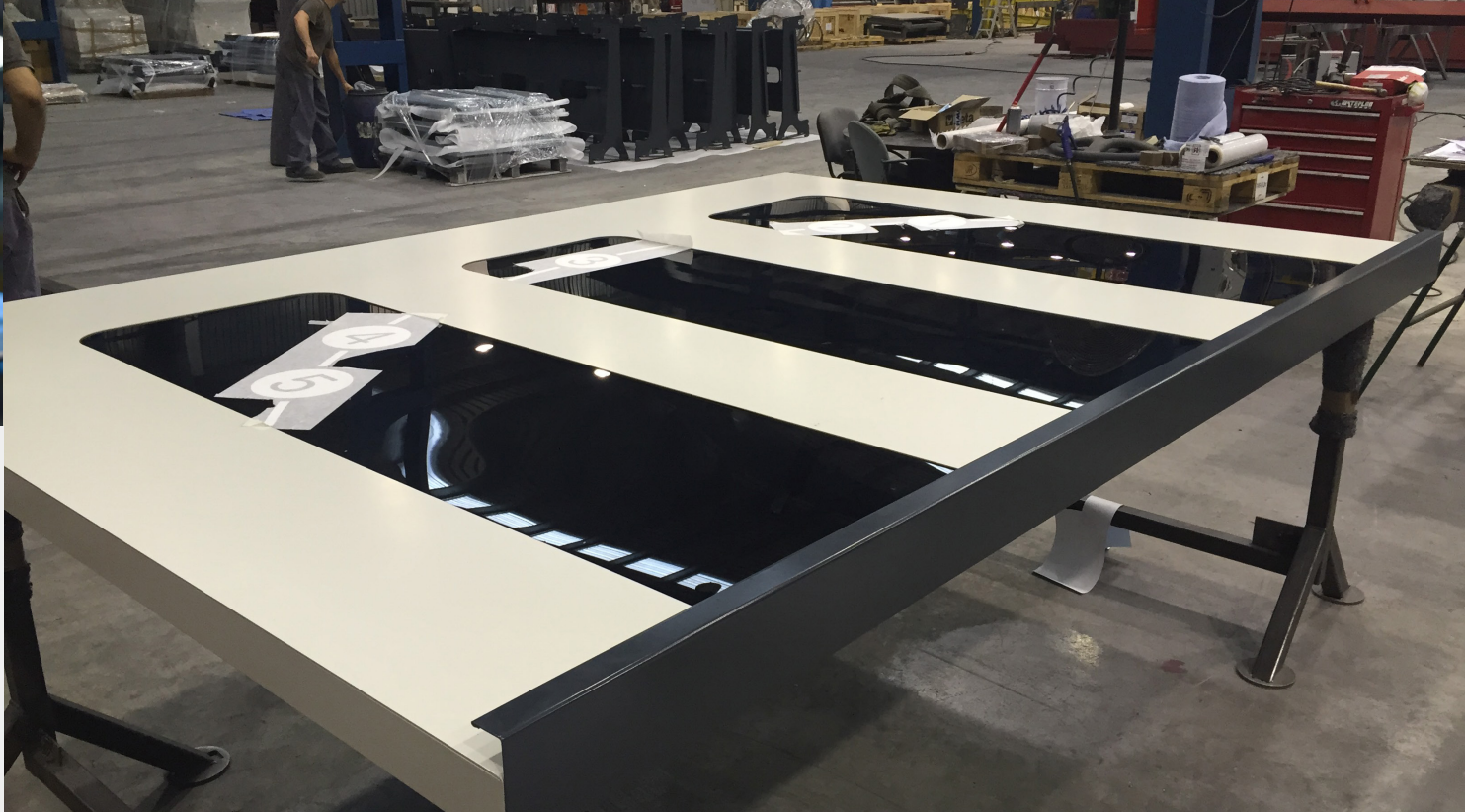
Advantages:

- > **Safety.** Sparks generation during welding process may be a risk for some kind of products or environments. With cold welding we avoid this risk completely.
- > **Time saving.** Standard welding requires a preparation and a process that may be longer in time than cold welding, moreover for some complex structures.
- > **Corrosion.** Traditional welding can cause corrosion issues that may be avoided with cold welding. In addition, not having to heat parts, the components will not have heat affected areas.

Cold welding is well considered as an alternative with good results and performance in many scenarios.



More information:
lasermimar.com/soldadura-fria/



We have adapted our company to new technologies arising in the market, so we can offer our customers the best results in cold welding.

— LASER MIMAR





PAINT & FINISH TREATMENTS

LASER MIMAR offers specific solutions for all those industrial sectors that request specific treatments with high demands. We have available our own **liquid paint facilities**, being capable of satisfying the most demanding sectors such as **railway industry**. We control all parameters of paint process: thickness, adhesion, scratch resistance, color, rust protection... It gives to the final part its **appearance and protection**.

Our factory is equipped with most advance technologies, including a **climate controlled paint cabin** where we can apply liquid paint. In addition, to add more flexibility to our process and offer cost saving solutions, we also have an aspirated floor area where all undesired smells and solvents are absorbed and treated to ensure workers health and wellbeing.

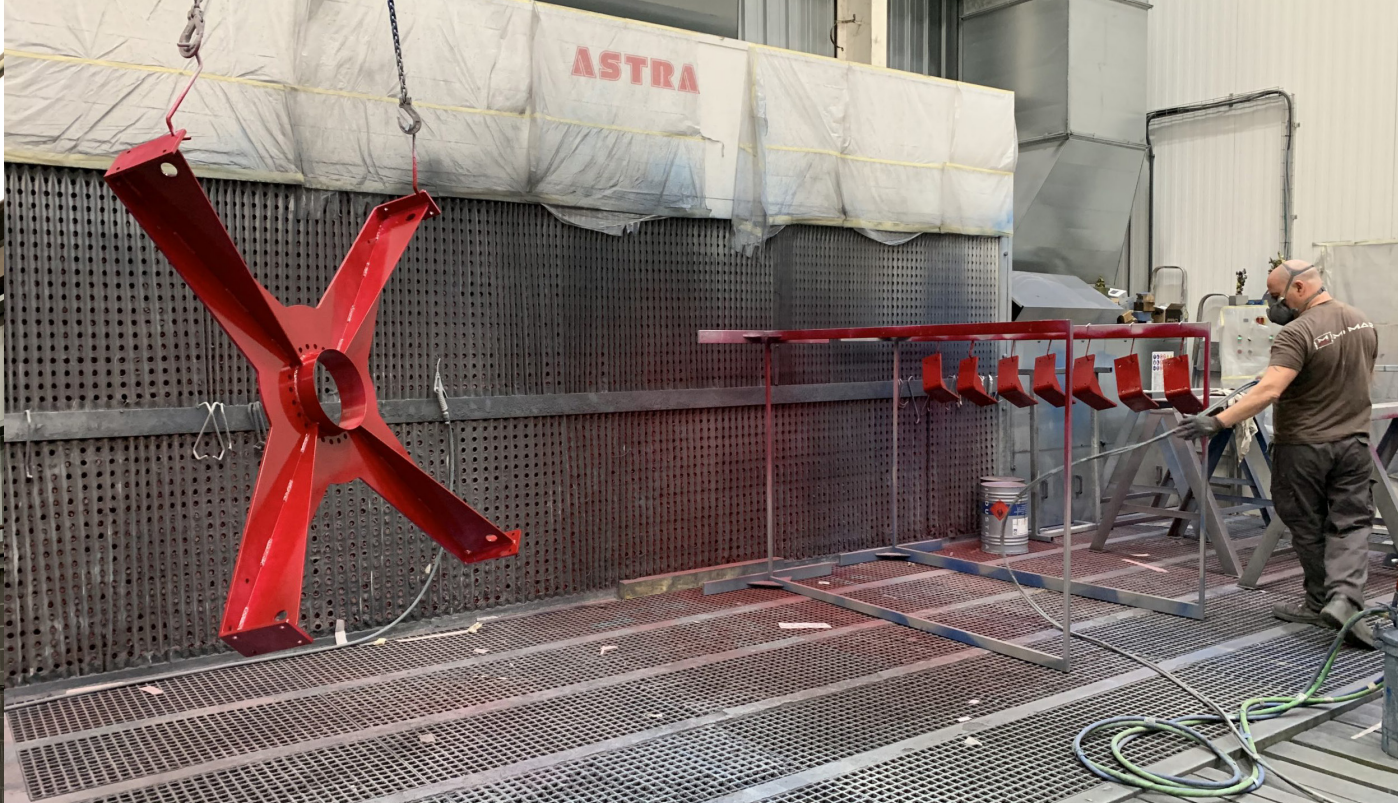
Liquid paint offers high quality finish with **stable results, quickly and efficiently**. It is a flexible technology for a process that can consider different volume projects having optimal results with very reduced costs.

All our painters have the **skills and experience** that guarantee an unbeatable aesthetical result with maximum quality.

ASTRA LAUNCH



More information:
lasermimar.com/pinturas/



LASER MIMAR offers its customers paints and finish with an integral service.

— LASER MIMAR





MACHINERY

Our **machinery and equipment** for metal forming allows **LASER MIMAR** to offer first class products and solutions. Machinery installed offers high efficiency processes for complex technical solutions.

We have been producing for metallurgy industry for more than 30 years, focused in sheet metal fabrication through **laser cut, bend, drill, rivet, weld and assemble**. We have the technical skills needed to face with guarantees the product development, the manufacturing preparation and the process optimization.

LASER MIMAR and **JG Automotive** offer manufacturing solutions based in the best machinery available in market and the most advanced technologies.



More information:
lasermimar.com/maquinaria-lasermimar/



Sheet Metal Forming

MACHINE	BRAND	MODEL
CYLINDER	ALBA & MUÑOZ	CC1
CYLINDER	VEMAXA / SERVIMAC	2000 X 6
CYLINDER	ALBA & MUÑOZ	CC-05
CYLINDER	ALBA & MUÑOZ	CC1
CYLINDER 3 ROLLER 2 M.	PLEASE	PIRAMIDAL B3-2021
SHEARS	RIGHT	TS 306
FOLDER	AJIAL	DOWTY
FOLDER	CASANOVAS	GC-1 50 TM.
AUTOMATIC FOLDING MACHINE	LVD	TOOL CELL 220/30 - 36665
FOLDER	AJIAL	COLLY
FOLDER	HYDROGERCA	BEYELER
AUTOMATIC FOLDING MACHINE	TRUMP CARD	TRUBEND 5230
CUTTING MACHINE	MG	BS280/60SH
CUTTING MACHINE	MIRACLE	320 BA CNC

Marking

MACHINE	BRAND	MODEL
TRUMARK 1110	TRUMP CARD	TRUMPF TRUMARK 1110

Laser cut

MACHINE	BRAND	MODEL
LASER	FIRST PLATINUM	3.000 x 1.500 x 20 (CO2)
TRULASER 3040 LASER	TRUMP CARD	4.000 x 2.000 x 25 (FIBRA)
CUTTING MACHINE	FAT	K-300M

CNC

MACHINE	BRAND	MODEL
HAAS UMC 500	HAAS	UMC 500 (5 AXIS)

Machining Center

MACHINE	BRAND	MODEL
HAAS VF-9	HAAS	B-565 YS

Robotized Welding

MACHINE	BRAND	MODEL
ROBOT TRUMP	TRUMP (FRONIUS 5000)	TRUARC SEE 1.000
MIG/MAG WELDING MACHINE	FRONIUS	TRANSPULS SYNERGIC 5000

Robotized Cell

MACHINE	BRAND	MODEL
CRY	KUKA (FRONIUS 5000)	ROBOT CON TRACK 7.000

Profile Bending Machine

MACHINE	BRAND	MODEL
PROFILE BENDING MACHINE	AJIAL	CPM 35

Machining

MACHINE	BRAND	MODEL
CNC LATHE	MARBLE	B-750 YS
CNC LATHE	MARBLE	280 MAN
CNC CUTTING MACHINE	CARIF	320 BA CNC

Arenado

MACHINE	BRAND	MODEL
SAND BLASTING MACHINE	LMM	VP 12X1 STD- INOX
SAND BLASTING MACHINE	LMM	SBF 10X8 INOX

Paint

MACHINE	BRAND	MODEL
PAINT CABIN	LAUNCH	CCH4000 – 11 x 5 m.
FLOOR AND SUCTION WALL	ASTRA	6.000 x 3.000

Welding

MACHINE	BRAND	MODEL
MIG/MAG WELDING MACHINE	LINCOLN	SPEEDTEC 405 SP PULSE
MIG/MAG WELDING MACHINE	LINCOLN	CV-510
MIG/MAG WELDING MACHINE	THE COMPACT	300
STT MIG/MAG/TIG WELDING MACHINE	LINCOLN	POWER WAVE S 350 CE
TIG WELDING MACHINE	CASTOLIN CASTOTIG	2202
TIG WELDING MACHINE	LINCOLN	ASPEC 300
TIG WELDING MACHINE	LINCOLN ELECTRIC	INVERTEC 400 TPX
TIG WELDING MACHINE	LINCOLN	INVERTEC 300 TPX
TIG WELDING MACHINE	REHM-APASOL	TRANSTIG 260

TIG WELDING MACHINE	LINCOLN INVERTEC	170 TPX
TIG – MIG WELDING MACHINE	FRONIUS	TRANSPULSSYNERGIC 4000
TIG – MIG WELDING MACHINE	FRONIUS	TRANSPULSSYNERGIC 2700
TIG – MIG WELDING MACHINE	FRONIUS	TRANSPULSSYNERGIC 5000
TIG-SMAW WELDING MACHINE	THE	RAIMBOW 200 HF
BOLT WELDING	BTV GMBH	CDP-66
WELD BOLT	ATS	LBS 75
SPOT WELDING	THE	NKLP 46
SPOT WELDING	APASOL	THE 90 MARK II

Workshop

MACHINE	BRAND	MODEL
STRAIGHT GRINDER	FLEX	H1206
STRAIGHT GRINDER	SUHNER	USK-6R
STRAIGHT GRINDER	FLEX	H1206
STRAIGHT GRINDER	SUHNER	USK-6R
STRAIGHT GRINDER	SUHNER	USK-6R
STRAIGHT GRINDER	FLEX	H1206
SANDER – POLISHER	SUPERLEMA	BE-2
POLISHING SANDER	GLASSES	-
STRIPPING MACHINE	SPEEDLINER AC/DC	S. PERFORMANCE
MOTOR – ROTOSFERA	PLAY	V-3
MOTOR – ROTOSFERA	PLAY	V-3
PLASMA	THE	PLUS 91
PLASMA MANUAL	HYPERTHERN	PMX 105

PNEUMATIC THREADING MACHINE	ROSCAMATIC	MODEL 400
PNEUMATIC THREADING MACHINE	ROSCAMATIC	MODEL 300
ELECTRIC THREADING MACHINE	ROSCAMATIC	TIGER MODEL
NUTSER MACHINE	BOLLHOFF	RIVKLE
SUCTION CUP SUPPORT – SHEET	IN THE MOUNTAINS	ECV10-M8 D225
DRILL	CLOCK	SR-25
DRILL	CLOCK	TSR-30
DRILL	IBARNIA	A 50
PERCUSSION DRILL	METABO	SLOT 32
SEMI-AUTOMATIC DRILL	CLOCK	TCA-35
TURN – POSITIONER	GULLCO	VI-SRA-3
TURN – POSITIONER	PLAY	-

Regulatory

MACHINE	BRAND	MODEL
FORKLIFT	KOMATSU	FB 25 N
FORKLIFT	JUNGHEINRICH	EJC M10 ZT
AIR COMPRESSOR	ATLAS COPCO	GA 15 FF – 8.5
AIR COMPRESSOR	ATLAS COPCO	GAI5VSD + FF
BRIDGE CRANE	GHB N° 84777	5 TN
BRIDGE CRANE	ATEC	0095 – 6,3 TN
BRIDGE CRANE	ATEC	0066 – 16 TN
BRIDGE CRANE	GHB N° 80021	5 TN
BRIDGE CRANE	GHB N° 80020	5 TN

BRIDGE CRANE	ATEC	0036 – 5 TN
BRIDGE CRANE	ATEC	0067 – 5 TN
BRIDGE CRANE	ATEC	2ON RIGHT 5T
BRIDGE CRANE	PIMEG-4	3.2 TM – 4317
BRIDGE CRANE	ATEC	6.3 TM – 0051
INDUSTRIAL VEHICLE	CITROËN VAN	CABSTAR 75
INDUSTRIAL VEHICLE	NISSAN CABSTAR	CABSTAR 75
INDUSTRIAL VEHICLE	NISSAN CABSTAR	S/M

Smart Warehouse

MACHINE	BRAND	MODEL
TRUSTORE 3040 LASER	TRUMP CARD	SERIES 3000

Surface Finish

MACHINE	BRAND	MODEL
POLISHING SANDER	SUPER MOTTO	BE-2

PRODUCTS

We carry out in **LASER MIMAR's** technical office all **engineering process** needed to develop products that will be finally produced in our factory.

Automated equipment and technical team allows us to offer high quality products as the best guarantee for our customers.

- > Machining
- > Machinery bench
- > Welded assemblies
- > Low pressure cylinders
- > High pressure cylinders
- > Frames
- > Train walls
- > Heat exchangers
- > Filters and valves
- > Product constructions



Preparation of *products for customers* at the **LASER MIMAR** factory.

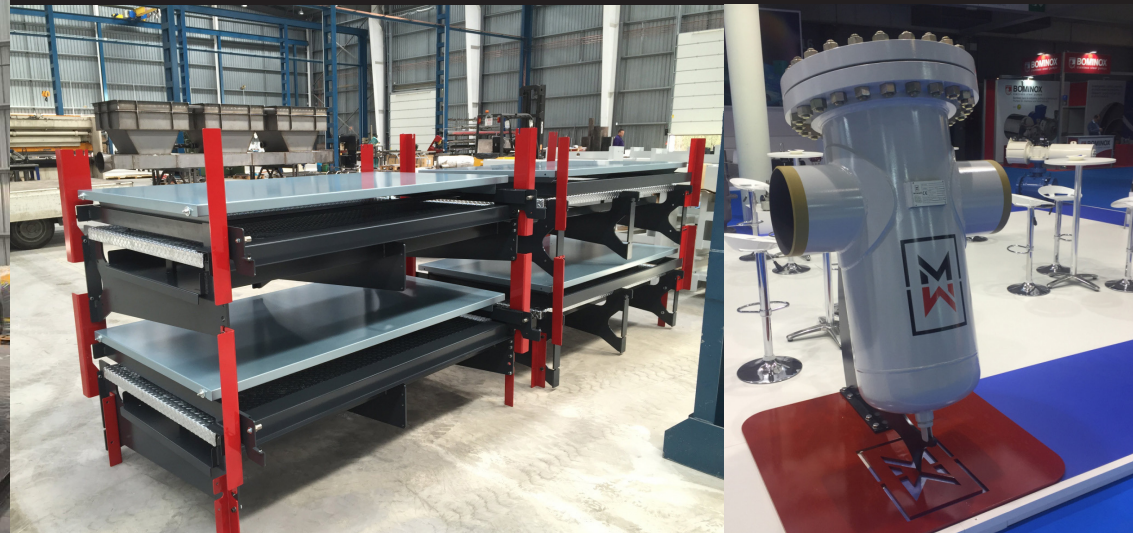


More information:
lasermimar.com/productos/



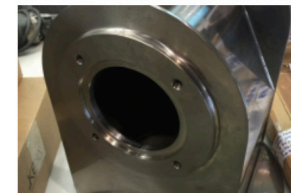
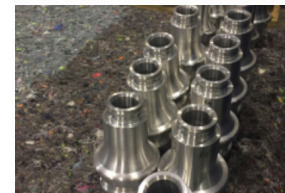
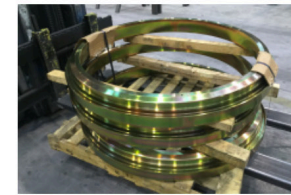
LASER MIMAR offers high quality products as the best guarantee for our customers.

— LASER MIMAR

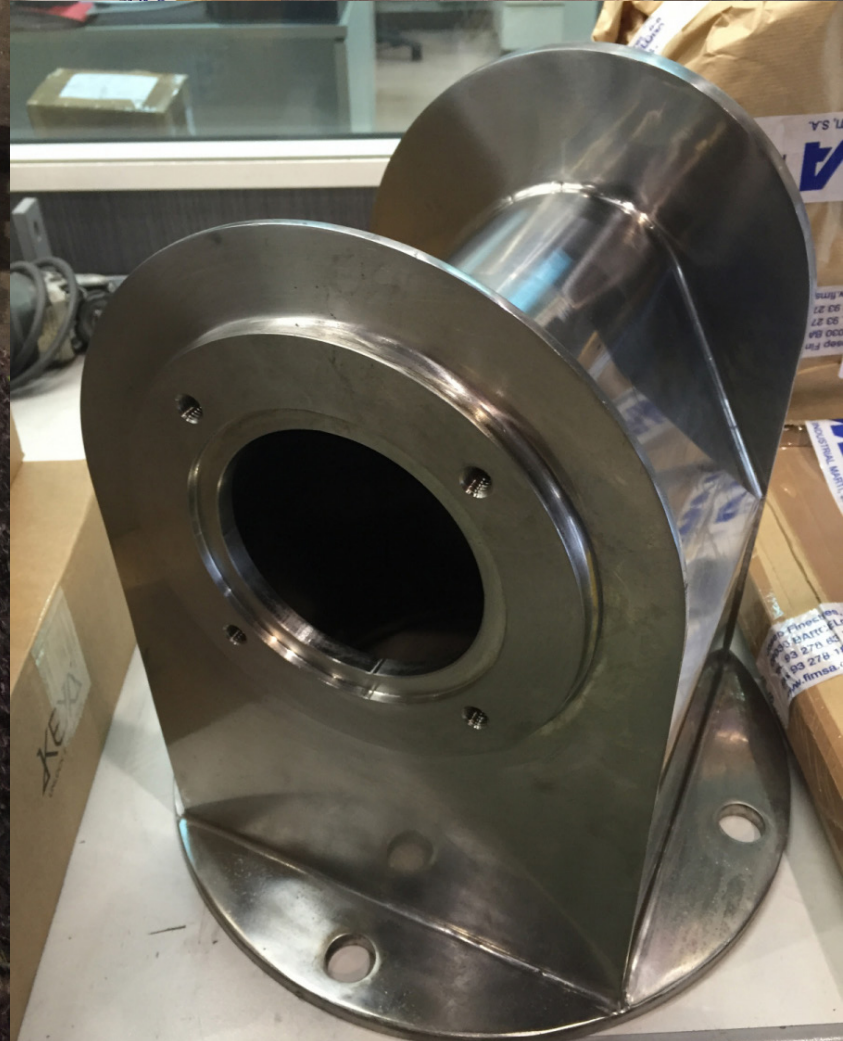
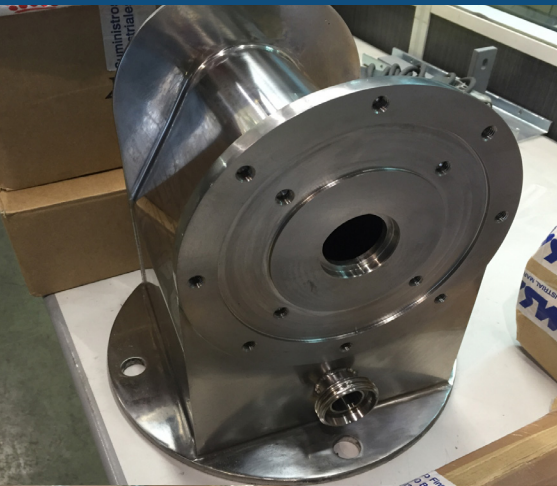
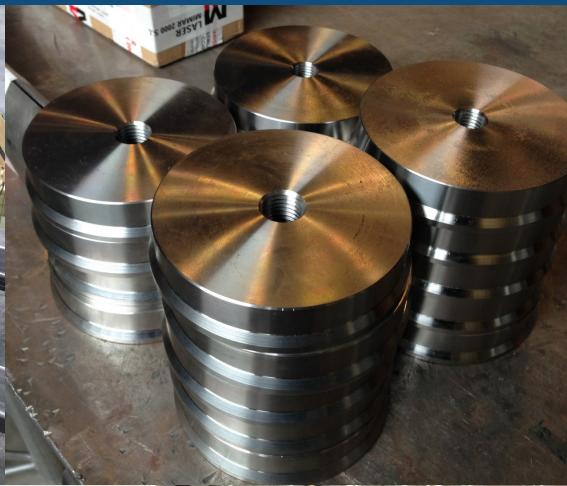
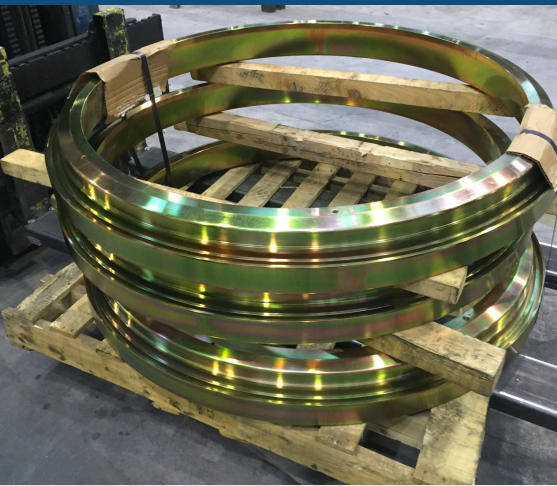


MACHINED PRODUCTS

In our design and engineering office we develop the necessary tasks for our **Machined Products** that will be developed later in our own factory.



More information:
lasermimar.com/productos-mecanizado/



MACHINE BENCH

In our design and engineering office we develop the necessary tasks for our **Machined Bench Products** that will be developed later in our own factory.



More information:
lasermimar.com/productos-bancadas/



WELDED ASSEMBLIES

In our design and engineering office we develop the necessary tasks for our **Welded Assemblies Products** that will be developed later in our own factory.



More information:
lasmimar.com/productos-conjuntos/

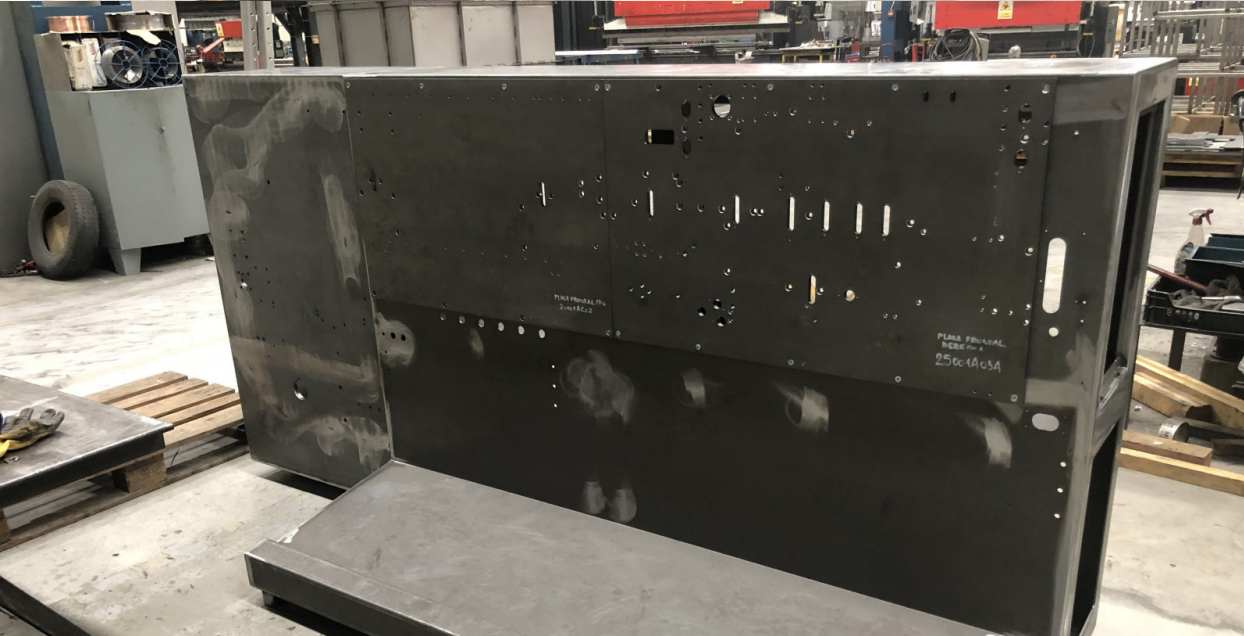


FRAMES

In our design and engineering office we develop the necessary tasks for our **Frame Products**, which are later developed in our own factory.



More information:
lasermimar.com/productos-carcasas/



ASSEMBLIES AND CONSTRUCTIONS

In our design and engineering office we develop the necessary tasks for our **Assembly and Construction Products** that will be developed later in our own factory.

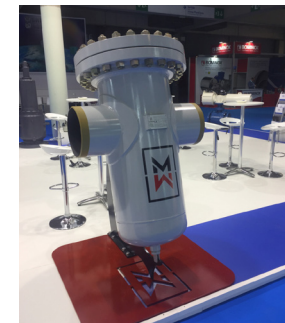


More information:
lasermimar.com/productos-montajes/



FILTRES AND VALVES

In our design and engineering office we develop the necessary tasks for our **Filters and Valves**, which are then developed in our own factory.



More information:
lasermimar.com/productos-filtros-valvulas/



HIGH PRESSURE CYLINDERS

In our design and engineering office we develop the necessary tasks for our **High pressure cylinders**, which are then developed in our own factory.



More information:
lasermimar.com/productos-depositos-alta-presion/



LOW PRESSURE CYLINDERS

In our design and engineering office we develop the necessary tasks for our **Low pressure cylinders**, which are then developed in our own factory.

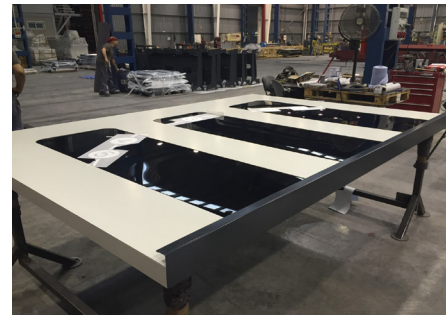
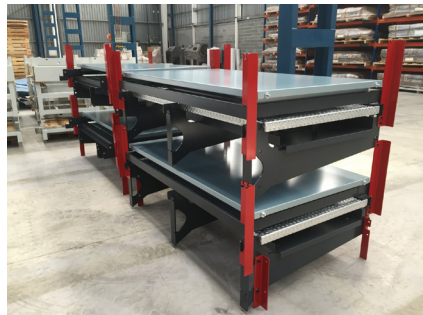


More information:
lasermimar.com/productos-depositos-baja-presion/



TRAIN WAGON WALLS

In our design and engineering office we develop the necessary tasks for our **Train Wagon walls**, which are then developed in our own factory.

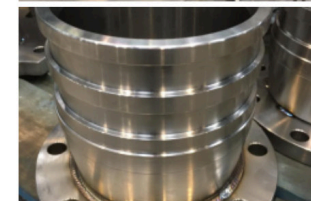
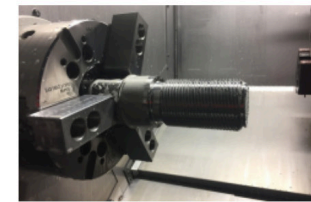


More information:
lasermimar.com/productos-vagones-trenes/

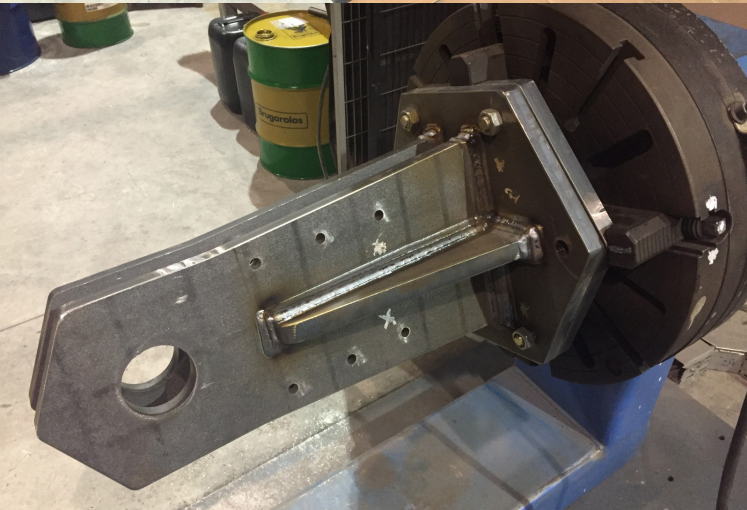
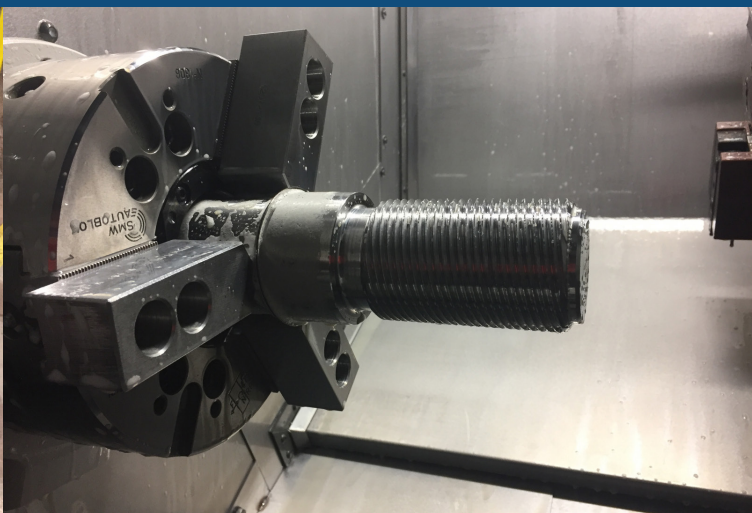


DIVERSE PRODUCTS

In our design and engineering office we develop the necessary tasks to develop **different kind of products**, in addition to ones already shown. All of them will be developed later in our own factory.



More information:
<https://lasermimar.com/productos-varios/>



CERTIFICATES

COMMITTED WITH EXCELLENCE

Working to achieve a management system focused in quality, years ago **LASER MIMAR** received accreditations and certifications related to its main activities, pursuing always to keep a continuous improvement in product and process:

— EN 15085-2: 2007



— ISO 9001: 2015



We have **qualified welding procedures** in accordance with **ASME IX, ISO 9606** and **ISO 15614**.



More information:
lasermimar.com/certificaciones/



CONTACT



ADDRESS:

Carrer Diesel, 1, Pol. Ind. 1
08150 Parets del Vallès, Barcelona
Spain

TELEPHONE:

(+34) 933 883 230

MAIL:

comercial@jgautomotive.com

WEB:

www.lasermimar.com



ADDRESS:

Avenida de la Industria, 32D
28108 Alcobendas, Madrid
Spain

TELEPHONE:

(+34) 916 572 874

MAIL:

comercial@jgautomotive.com

WEB:

www.jgautomotive.com



More information:
lasermimar.com/contacto/



MIMAR

JG AUTOMOTIVE
Your partner in metal solutions

www.lasermimar.com